

Challenge

The Parish Newsletter of St Mary's, Weston Colville and St Andrew's, West Wrattling
The views expressed herein are those of the contributors.
Printed by E & E Plumridge Ltd, Linton (Cambridge 891407)

West Wrattling Harvest Supper

Saturday 14th September – please save the date.

This will be similar to previous suppers but we will be asking everyone to contribute to the food provision and preparation. If you would like to volunteer to provide a poached salmon, a coronation chicken or a piece of ham that would be great. We will also be asking for contributions of quiche, salads and dessert.

Tickets £10 per head (to include the first glass of wine) will be available from Charlotte Vallins (Charlotte.vallins@hotmail.com). We expect the tickets to sell quickly!

Sherry, Charlotte, Fanny, Tamara

Tea and Cakes

July attracted a smaller gathering, but that is the fun of Tea and Cakes.

Sometimes we are surprised by a huge attendance with hordes of hungry children racing about having fun, other times it's more intimate. Thank you to everyone who helps to make Tea and Cakes such a successful and enjoyable event.

Our next gathering will be on Friday 2nd August, 3.30 - 5 pm, at the Reading Room. Please come along and join us for a cuppa, a piece of cake and a chat. All welcome. And don't forget, in September we move to the third Friday of the month.

Melanie (291319)

Clay Day Alert

We have a few spaces left for Saturday 24th August; please let me know if you would like to join us for our annual morning of clay shooting.

All funds raised will support our church, St Andrew's.

Simon Sampson
(01223 290461, Simon.sampson@btinternet.com)

Saturday Morning Café, West Wrattling

Join us for a catch up over tea / coffee and delicious cake at the next cafe on Saturday 3rd August between 10.30 am and 12 noon in the village hall. The money raised continues to be donated to local community projects. This year, all proceeds from the bookstall will go to Granta School.

All proceeds from the August café will be donated to the West Wrattling playground redevelopment. Please come and support them!

Sherry (290070) and Catherine (291307)

West Wrattling Church and Village BBQ

Following the Songs of Praise service on Sunday 9th June, around 100 people gathered on a sunny afternoon in the church grounds for a bring and share BBQ, a teddy bear parachute drop and some live music performed by a special three-man group.

Thank you to all who helped with the fires, the food prep, the cooking, the bear drop, the setting-up, clearing-up and the live music. It was a great community event.

Scilla, John and the team

Granta Vale Community Hub

Thursday 1st August, 1.30 – 3.30 pm

All are welcome for a cream tea and chat at our monthly Community Hub in the Church Institute in Balsham.

We also offer help and advice from the Parish Nurse Project, Reach Community Project and other local organisations.

Steve Jordan





Caroline Pinkham-Smith

MCFHP MAFHP

Foot Health Practitioner

Nail Trimming, Corns, Callus, Fungal & Thickened Nails, Cracked Heels, Ingrowing Toe Nails, Athlete's Foot, Verrucas

07969 253674

Home visits and Clinic appointments available

West Wrattling Playground Improvement

Progress so far: we now have a good idea of the kind of play equipment our young people would like to enjoy here in West Wrattling. To replace what we have and add the very popular zip wire, the cost will be up to £77,600. So far we have been granted £9,995 from the National lottery Community Fund, and we also have the support of the parish council and our wonderful Saturday café. Two further grant applications are in progress, but we still need more fundraising, especially from our community and playground users.

Please support the project by donating money or joining in with fundraising games at the Saturday Morning Café (3rd August, 10.30 -12.00). Hook a duck and the peg game will be back, plus the usual drinks with delicious cakes and good conversation.

Donations can be made through West Wrattling Parish Council (account number 07159530, sort code 30-13-55). Any donations, large or small, will help us to keep the playground open and make it into a happy focal point for our young people.

Louise Chandler (Louise@chandler1.co.uk)

www.facebook.com/WestWrattlingPlaygroundImprovement/

Harvest Traffic

West Wrattling Estate apologises for any noise and slow moving vehicles over the harvest period. It is a vital part of country life and most of our crops are for human consumption, ie wheat for bread and oilseed rape as a healthier alternative to olive oil, so when you are behind a trailer, have some patience, as it will not be for long.

Nigel Clayson (07759 204659)

Foreman, West Wrattling Park Estate

Over 60s

Everyone attending last month's garden meeting at Jo's agreed they had an idyllic afternoon (thank you, John and Jo) in their garden on the outskirts of the Linton countryside.

This month on 7th August we are kindly invited by Mary to visit her at the Land Settlement in Abington. If you need to confirm your leaving time please contact your designated driver; we hope to meet at Mary's at around 11 am.

For our following meeting on 4th September we will be returning to The Chestnut Tree for our usual lunch etc.

Wendy Halls

Seniors

We had a good discussion at our meeting in July, on how we see the group progressing.

We also had a session of Art Therapy and Mindfulness with Charlotte, which was very thought provoking and produced some interesting pictures.

The group is taking a break in August due to holidays. We will return on Tuesday 10th September at the Reading Room for 2.30 pm.

Janet Morris will be giving her talk entitled 'Godolphin Arabian, Eclipse and Plenipotentiary from Wandlebury to Horseheath via West Wrattling – the horseracing connection'. This was postponed from earlier this year, and will be followed by chair yoga with Charlotte.

We are a friendly group open to any seniors in our local villages. Please feel free to contact me on 290837.

Val

Mutton and Lamb

Locally produced in Weston Colville
Available fresh by arrangement, or frozen.

Telephone Jerry to discuss requirements.

01223 290076 or 07970 154161

(Farringford, Mill Hill, Weston Colville)

GARDEN MAINTENANCE

We offer a professional and reliable service from lawn mowing to new planting projects. Other services include tree surgery and hedge cutting.

Please telephone Zara or Francis at

Napier Garden Planning

Tel : 01638 508847

Westley Waterless, Newmarket
e-mail: napierfz@aol.com

Weston Colville Circular Walk

A baker's dozen came on our July walk. It was a new adventure, beginning in West Wickham and led by Janet Morris of West Wickham Historical Club, who showed us the site of the lost Horseheath Hall. We only got wet for five minutes and saw big skies in sunshine with views of West Wrating windmill, the turbines, Balsham water tower and the one on Rivey Hill, and the site of the 1912 'Manoeuvres'. All this with golden fields either newly-harvested or still swaying softly in the breeze.

The next walk will be on Saturday, 21st September, meeting in the Reading Room at 10 am, BYO lunch and maybe something to share back in the Reading Room afterwards. All welcome, refreshments available.

jacquelinetheteacher@hotmail.com, 291475

West Wrating Book Club

Just a reminder that we will next meet at The Chestnut Tree at 8 pm on Wednesday 16th September. The books to be reading are 'The Diary of Anne Frank' and 'Wilding' by Isabelle Tree.

The book for October will now be 'The Go-Between' by L P Hartley (date to be confirmed) which will be a link-up with the Weston Colville film club.

Linda Gorman (290653)

Football Speaker Evening

Saturday 19th October – an evening with World Cup Winner Ozzie Ardiles and Spurs UAFA Cup-winning captain Graham Roberts. Tickets on sale from The Chestnut Tree, £30 including either fish & chips, chicken & chips or sausage & chips. Fully licensed bar, auction.

Blanche Miller, WW Pavilion Secretary

West Wrating Village Hall

Licensed for entertainment and sale of alcohol

Ideal for:

- weddings, family functions, children's parties, meetings, fundraising events & performances
- spacious stage, modern kitchen & separate bar area
- disabled facilities
- excellent sound system
- furniture, crockery, etc also available for hire

01223 290270

wwwvhbookings@gmail.com

www.westwrating.org.uk/village-hall/

West Wrating Oil Syndicate

July's delivery was from BoilerJuice at 45.00p per litre, and twelve households had orders.

There is no fill-up scheduled for August, but there will be a syndicate order next month, with a cut-off date and time of Monday 9th September at 6.30 pm.

Phil Tempest (WestWratingOil@gmail.com)

Summer Tennis Camp: West Wrating

This year Ali Mcgee will be running a tennis camp in West Wrating, Monday 5th - Wednesday 7th August.

Classes cost £8 each and will run from 9 - 10.30 am for 5 - 8 year olds and 10.30 - 12 for 9 - 15 year olds.

If you would like more information or to book a place on the tennis camp please contact Ali on 07581 087325 or alimcgee123@yahoo.com

Cally Wilson

Macmillan Coffee Morning



Bena and Helen will be holding their Macmillan Coffee Morning on Friday 27th September at Fourwinds, Carlton. Everyone welcome.



HOME ANIMAL CARE

Let me take care of your pets, while you are out at work or away on holiday. I am a very responsible and reliable registered Pet Sitter, with many years' experience. I am fully insured and would like to have the opportunity to care for your pets.



NARP National Association of Registered Pet Sitters

Phone: Catherine 01223 291411 / 07778 921334
info@homeanimalcare.co.uk
catherineneale9@icloud.com

PLUMBLINE

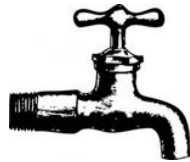
PLUMBING AND HEATING ENGINEER
PROFESSIONAL DOMESTIC PLUMBING SERVICE

Including Property Maintenance
Painting: Tiling: Plastering: Carpentry

Call John on
01223 893903

Supcik@talktalk.net
Fully Qualified and Insured

Friendly and Reliable Service No Job Too Small



Reed Flooring

Measure . Supply . Fit

- Carpets, Vinyl and more
- Experienced, professional and friendly service
- Free no-obligation quotation
- Domestic and commercial – a wide range of products to suit all budgets
- Samples brought to you in the comfort of your own home/workplace
- Measuring and fittings arranged for a time that suits you
- Unbeatable prices

07909 110772 01279 815185

reedflooring@gmail.com www.reedflooring.co.uk

Parish Matters

I am so thankful to be settled now into the vicarage in Little Abington and so appreciative of the warm welcome we have received. We are enjoying the daily rhythm of village life and are loving the increasing familiarity of friendly faces to pass the time of day with as we walk our dog Freddie around the village.

I am keen to learn about our villages and have thoroughly enjoyed supporting the team serving the Abington Lunches as well as volunteering at the Great Abington School Fete. I am also really thrilled that we will be hosting a Community Hub in the Great Abington Institute on Tuesday 24th September between 2 - 4 pm. This will be a chance to share free



tea, coffee and cake together as well as meet with our Parish Nurse and other representatives from community organisations. It's also an opportunity to take a break if you wish from the hectic nature of life either side of the school run. We will be serving refreshments from both the terrace and the main hall, so please do stop by and say hello if you can.

Part of my focus as a Lay Pioneer Minister has been to support our churches in providing more spaces for people to enquire about and connect with Jesus. I am really enjoying our diverse Café Church services which we hold in Hildersham, Balsham and West Wrattling at 4 pm on Sundays. This, like the Hub, also involves delicious cakes and coffee as well as a chance to meet with others and consider questions about life and faith. In the autumn, inspired by the 'Space to be' reflection group run on Wednesday evenings by Rosemary Mead, we will have a new mid-week lunchtime group providing a space for meditation in Great Abington Church. To find out more about any of these services or groups please do get in touch.

Jeanine Kennedy, Pioneer Minister
(893838, jeaninekennedygv@gmail.com)

Friday 9th August
Crafty Morning Drop in
between 10 am and 12.30
at **West Wrattling Village Hall**



Just Drop In when you can and bring along your current project to work on!

Don't have one? Just come along anyway for a chat, ideas and inspiration. Everyone welcome.

A cup of tea/coffee and maybe some cake on offer too! (Last month it was lemon!)

Small donation towards VH hire appreciated

Contact Rhiannon for more information: 291490

Next one will be on Wednesday 11th September.

www.westwrattling.org.uk

for information on:

What's On	Directory	Parish Council
Parish History	Local Sports	Village Hall Events
Church News	Parish Matters	Village Calendar

Please send us your contributions, events, notices, photos and comments.



SEWING & CRAFTING



AT THE SEW CRAFTY WORKSHOP, 7 HONEY HILL, WEST WRATTING CB21 5NQ

Combine art and sewing and make something unique!

£20 per 2 hour workshop, includes all materials, a soft drink and snack
(children can stay during lunch, just bring a packed lunch if they want to do both sessions)

Dates: August 7th, 14th, 15th, 21st, 28th, 29th, 10 am - 12 noon, 1 pm - 3 pm

NEW Starting 11th September - Learn to Sew After School Club
6 week course, £60 including all materials, max 4 pupils per class

Level 1: 4.15 - 5.15 pm, Level 2: 5.45 - 6.45 pm

Adult beginner sewing lessons available.

For workshop list, requests and club information please contact:

Rhiannon Waygood

01223 291490

07774 414085

rhiannon.sewcrafty@yahoo.com

DBS Enhanced Certificate held

Please note this is a dog friendly household

Weston Colville Face Book

The village face book page has a considerable amount of useful information listed within the very first item, accessed by clicking on the 'see more' tab. If you have a suggestion for additional items please contact admin or post in the main discussion area.



Peter Milner (290540)



WOODHOUSE LANDSCAPE LTD
Garden design and build company

Contact us today for a consultation:
01223 290029
info@woodhousetandscape.co.uk

GARDEN DESIGN
LANDSCAPING
NATURAL POOLS

www.woodhousetandscape.co.uk

BRINGING THE PUB BACK TO WESTON COLVILLE



- REAL ALE & CIDER FROM LOCAL BREWERIES, LAGER, GUINNESS
- WINE & PROSECCO
- SOFT DRINKS
- FOOD BY PIZZA MONDO - WOOD-FIRED NEOPOLITAN PIZZAS

WESTON COLVILLE READING ROOM

FRIDAY 13th SEPTEMBER

BAR & FOOD 6.30 - 10.00 PM

FOR INFO, CONTACT: newtonjed@gmail.com

West Wrating Parish Council

At the parish council meeting held on Monday 22nd July the following matters were some of the items discussed. The full draft minutes are posted on the noticeboards.

Electoral Matters: Cllr Holness (Chairman) resigned from the Parish Council due to his moving from the village. He introduced Martin Davey who had agreed to be co-opted onto the council if agreed. He was proposed, seconded and agreed and signed the necessary Form of Acceptance. Cllr Nichols (Vice-Chairman) was proposed to be Chairman, seconded and agreed by the council and Cllr Bonfield was proposed to be Vice-Chairman, seconded and agreed and both accepted the positions. Cllr Nichols thanked Cllr Holness for being such a good team leader and the many projects accomplished through his efforts.

Standing Orders: it was agreed that the wording ‘vulnerable adults’ should change to ‘adults at risk’, being part of the Safe Guarding Policies and these Policies would be added to the Standing Orders.

Correspondence: MAGPAS air ambulance had written asking for a donation and after a short discussion it was agreed to send a ‘one-off’ donation of £50.

Planning:

S/2063/19/ FL	C Hodson	4 Hayter Close	Conservatory to rear	approved
S/2024/19/ VC	C Harris	35 Six Mile Bottom Rd.	Variation of condition 2 re S/4294/19/VC	Refused see comments
S/1796/19/ FL	J Morrow	21 The Common	Discharge of condition 4	
/1855/19/ FL	DCH Constr.	Site adj. to 27 Six Mile Bottom Rd.	Re S/3951 Discharge of conditions 4, 5, 6 and 7 re site adj. to 27 Six Mile Bottom Rd	
S/2216/19/ FL	A.Brown	59A High St.	Single && 2 storey rear ext. window to side elev.	
S/1514/19/ FL	H. d’Abo	Mines Park, Weston Colville	Re-sub. of S/1311/6/FL for erection of country house etc.	

Audit for 2018/19: the Letter of Exemption sent to the external auditors was confirmed by them. The Internal audit has been carried out satisfactorily.

Finance: full details of payments and monies received are in the minutes.

Fox Road Barriers: the Gating Order is still not agreed upon. The parish clerk will seek further information.

TIM PHILLIPS & Co.
Accountants

Independent, specialist service for:
**Small Business • Self Assessment
Personal Taxation**

Free initial consultation – no obligation
EASY, FREE PARKING

Copley Hill Business Park, Cambridge Rd., Babraham
Off A1307 between Wandlebury and Babraham
Tel: 01223 830044. www.tpaccounts.co.uk

Recreation Ground and Pavilion: due to Cllr Holness’s resignation Cllr Davey agreed to join Cllr Roberts as representatives on the Sports Pavilion committee.

Play area: a grant of £9,995 has been awarded from the Community Fund and thanks were given to Cllrs Chandler and Glennon-Lynch and their team for accomplishing this.

Reports from County Cllr Batchelor & Dist Cllr Harvey are published on the website.

The next parish council meeting is on Monday 9th September at 8 pm. All are welcome.

Jenny Richards, Parish Clerk



COUNTRY GARDENS & LANDSCAPES

FULLY QUALIFIED AND INSURED
REFERENCES AVAILABLE
AS FEATURED IN GARDENERS WORLD MAGAZINE

HARD AND SOFT LANDSCAPING, PATIOS, BLOCK PAVING, DRIVEWAYS, FENCING, TREE SURGERY, HEDGE CUTTING, TURFING, GARDEN MAINTENANCE, PLANTING

MOB: 07795 364135
TEL: 01440 761028
ALEX.COLMAN@BTINTERNET.COM



WHEATSTONE
CARPENTRY

GENERAL & BESPOKE WORK UNDERTAKEN

07899 640912 wheatstonecarpentry.co.uk
wheatstone.carpentryltd@gmail.com

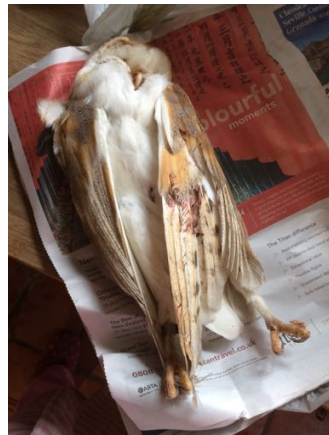
Weston Colville Marsh Tit Study

This month, the yellow Marsh Tit juveniles are ravenous and heading for garden feeders. They're not very street-wise, so a number of them will make fatal mistakes. One cause is visiting feeders which are out in the open, allowing Sparrowhawks to sneak up on them at speed.

Which leads into a plea. We need your help to stop fatalities on the B1052 between Balsham and West Wrating.

All you have to do is drive more slowly round the farm bend. A number of birds are found dead on this bend: Ducks, Moorhens, etc.

On Tuesday 25th June at 7.15 pm, Lucie Shaw found this freshly-killed Barn Owl on the roadside near the bend. It was an adult male, wearing a bird ring. The vehicle collision which killed the Owl was fast enough to damage the metal ring and make it difficult to read the number on it, so we named the bird 'Barnie'.



Luckily, Lucie is wise in the ways of ringers. She noted the time and location of her discovery, kept the bird cool, and contacted me on cambsmarti@gmail.com. (m_stammers@btinternet.com and Challenge are just as good). As a result, a considerable amount of conservation data could be gathered from Barnie's sad demise. The ever-valuable Joyce Oliver was able to collect Barnie, freeze him within 24 hours of death and send him, by prepaid parcel, to the Predatory Bird Monitoring Scheme at Lancaster. The PBMS will

give Barnie a post-mortem exam and check for pesticide/agrochemical build-up in his tissues. This is incredibly useful for local farmers as an early warning system. Being at the top of the food chain, eating lots of small foraging mammals, Barnie will be the first to show any rise of these materials in the environment, before it affects the quality and commercial value of crop yields. So, in the unlikely event that a build-up is detected, farmers can take action before it hits their livelihoods and our food.

Meanwhile, a sustained trawl through the national database allowed us to piece together Barnie's ring number – GR96074. This gave us his CV. Barnie hatched five years ago near Soham Lode, just northwest of Soham. He was ringed as a chick on 26th June 2014. In the intervening years, Barnie



moved a net distance of 20 miles due south to the farmland between West Wrating and Balsham. There he

met a fast vehicle coming around his bend on the B1052. Neither driver nor bird saw each other until too late to react.

Evidence suggests that life on this planet started slightly less than 4,000 million years ago. Birds and ourselves have a common ancestor – the clade Amniotes – just over 300 million years ago. A bird may not be your aunt or uncle, but they're our close relatives among living things. So, please keep it slow around Barnie's Bend and save the life of a relative or two as you go about your own busy lives. You'll save energy and the planet too.

Enjoy your high summer,

Alex Inzani and the amazing South Cambs Ringing Group



SQUEAKY MOUSE

Local, Professional Computer Help and Support

www.squeakymouse.com

01223 852 872

support@squeakymouse.com

Help with Transport

Community Bus – if you see a plain white minibus with orange destination at the front, that's our number 19 community service that comes along four times a day Monday to Friday, about every two hours, and you pay the driver/use your pass as you would with any bus. If you want to know when and where it goes, this is from the current timetable:

Weston Colville, opp Church End	09:00	11:30	13:30	16:00	
Weston Green, opp Chapel Road	09:02	11:32	13:32	16:02	
W Wickham Burton End (opp 29)	07:51	09:08	11:38	13:38	16:08
W Wickham, opp White Horse PH	07:52	09:09	11:39	13:39	16:09
W Wrating, opp Spicer's Close	07:54	09:13	11:43	13:43	16:13
Balsham, opp West Wrating Road	08:00	09:16	11:46	13:46	16:16
Linton, opp Hillway	08:08	09:23	11:53	13:53	16:23
Linton, opp The Crown PH	09:23	11:53	13:53	16:23	
Bartlow, nr Little Barham Hall	09:28	11:58	13:58		
Shudy Camps, opp Carter's Farm	09:31	12:01	14:01		
Castle Camps, opp The Manse	09:36	12:06	14:06		
Nosterfield End Haverhill Road (N-bound)	09:40	12:10	14:10		
Haverhill, opp Sainsburys	09:43	12:13	14:13		
Haverhill Bus Station (Stand 3)	09:48	12:18	14:18		
Haverhill Bus Station (Stand 3)	10:20	12:20	14:50		
Haverhill, adj Sainsburys	10:25	12:25	14:55		
Nosterfield End Haverhill Road (S-bound)	10:29	12:29	14:59		
Castle Camps, opp High Street	10:33	12:33	15:03		
Shudy Camps, o/s Carter's Farm	10:38	12:38	15:08		
Bartlow, opp Little Barham Hall	10:41	12:41	15:11		
Linton, nr Hillway	10:47	12:47	15:17	16:23	
Balsham, nr West Wrating Road	10:53	12:53	15:23	16:29s	
W Wrating, nr Bull Lane	10:55	12:55	15:25	16:31s	
W Wrating, nr Spicer's Close	10:56	12:56	15:26	16:32s	
W Wickham, o/s White Horse PH	10:59	12:59	15:29	16:35s	
Weston Green, nr Chapel Road	11:06	13:06	15:36	16:41s	
Weston Colville, nr Church End	11:08	13:08	15:38	16:43s	

Helping Hands (07399 263222) – covers West Wrating, Weston Colville, West Wickham, and Balsham and will take you to a hospital or doctor's appointment, or 'essential social journeys' for 30p a mile. Co-ordinators are responsible for finding a driver to fill every request. (New volunteer drivers or co-ordinators please contact Jenny Gooch on 01223 290662).

Voluntary Network (formerly Three Counties Transport) (01440 712028) – dial a ride to Haverhill and destinations in between, for medical and non-medical visits. Complete an application and pay £15 annually to register, then either book 7 - 10 days in

PEST CONTROL SERVICES

AGRICULTURAL AND DOMESTIC

CLUSTER FLIES, LOFT AREA,
RABBITS, RATS,
MICE, MOLES, WASPS & INSECTS

CONTACT R DANIELS
01223 290570 / 07773 682676

advance, or phone nearer the time, including on the day, and if your times are flexible, a driver may be available. You give out and back times; it's about £8 return for a journey to Haverhill. All vehicles are wheelchair accessible and can take up to eight people plus one wheelchair.

Royston and District Community Transport (01763 245228) – they have a driver in Great Abington, for any purpose of journey, pay mileage from Great Abington to you and then to your destination at 55p a mile, with a minimum of £5.50 for ten miles or fewer.

Jacqueline Douglas (291475,
jacquelinecommunityworker@gmail.com)

If you think you may need any of these transport options, please cut out and keep this page of Challenge.

Request for Egg Boxes

Please may I put out a request for any empty egg boxes that might otherwise be put in the recycling bin or composted? Thank you.


Margaretha Galt (290726)

Balsham WI

For our July meeting we all enjoyed a summer party on a very pleasant evening in the grounds of the Balsham Institute, with a delicious spread of antipasti and homemade puddings. We filled in a questionnaire which asked the members how we wanted our WI meetings to proceed, and there was also time to have a good old natter which we don't always get the chance to do at our ordinary meetings.

Our monthly meetings are held on the second Tuesday of the month at 7.30 pm at the Meadow School, Balsham. Our next meeting is on September 10th and our speaker will be one of our members, Gean Taylor, talking about Holistic Healing.

Alison Clarke (894031)



**JACKSON & JACKSON,
BABYSITTING SERVICE**

- We are two friendly, local teenagers aged 14 (school year 10) who live in Weston Colville
- We successfully babysit children aged 2+ years
- We cover Weston Colville, West Wrating, West Wickham & Balsham
- Competitive fees

Emily Jackson 01223 291258
Holly Jackson 01223 290854

The Meadow School

This time of year is always a time for reflections as the children prepare for transition to either new schools, new classes or new key stages. Years 5 and 6 put on a fantastic production of 'Pirates of the Curry Bean' at the end of term. The children fulfilled the roles they had been given very well, whether it was leading parts or supporting through singing and dancing. The script was hilarious and the children had perfected the comic timing! Everyone sang the songs with enthusiasm, learnt their lines without needing prompting, and performed clearly. A special thanks to all the adults from inside and outside school who made this possible; a real community effort.

The Year 6 children also had reason to celebrate at the end of term with excellent SATs results yet again. They have once again managed to prove that it is possible to succeed without needing to abandon a broad and balanced curriculum. Results for all areas are above Cambridgeshire and National across the board in reading, writing and maths, with particular success in maths, where 93% scored at or above expected standard. This success was also replicated at Early Years, Year 1 phonics screening and at Key Stage 1 SATs. We are proud of each and every child who works so tirelessly to achieve their potential.

An end of term whole school trip has become a tradition over the past few years. Once again, the sun shone on us all day at Hunstanton beach, as the children built sandcastles, splashed in the sea, ate ice-creams, and Years 5 and 6 even screamed at the funfair. A huge amount of preparation goes into organising a day such as this but is so worth it when we see children of all ages playing together, building on strong friendships, problem solving over their sandcastles, and facing their fears in the sea for the first time.



Charter House
Burrough Green
Newmarket
Suffolk CB8 9NG

JAGGARD & SON

FIREWOOD
quality logs cut and split to requirement

COAL
solid fuel to suit all fires

MULCH
graded woodchip for gardens etc

01638 507330 07766 566226
rdjaggardandson@btinternet.com

We have welcomed some special visitors to our school this month, all the way from China. The Year 5 children worked alongside some Chinese students who have visited England as part of a cultural education programme. The children took part in cooking, music, art and PE to get to know each other and provide opportunities for the visitors to practice their English. Our pupils made them feel so welcome, despite occasional language barriers, and hopefully this will be just start of a long-standing pen friend relationship.

Anne Westland also came into school to judge her annual writing competition. She is always so complimentary about the standard of writing of our Key Stage 2 children and this year was no different. After a tricky judging process, she made Tom Wilson the overall winner of the trophy for a fantastic, emotive poem about Nelson Mandela. There were a number of runners up from across the key stage. Huge congratulations to everyone who received a prize from Anne.

We do hope that everyone has a very restful and well-earned break over the summer. Huge thanks to anyone who has been involved in making this academic year a success once again.

Helen Loe, Assistant Headteacher



As a long established Haverhill firm we are the natural choice for all your accountancy and tax requirements

Contact Jon Griffey, Philip Hackett or Simon Iron or just call in to our offices on the Market Square, 2 Mill Road, Haverhill

☎ 01440 762024
www.hackettgriffey.com

△ Eastern Counties Oil Services

- ✓ Boiler and range cooker servicing
- ✓ Grant boilers registered G-One Plus installer
- ✓ Free 5 or 10 year guarantee on new Grant boilers
- ✓ Pressurised hot water systems registered installer
- ✓ All aspects of plumbing and heating work undertaken
- ✓ 24 hour emergency service available

Weston Colville: 01223 291374 or 07827 810344

john@easterncountiesoilservices.co.uk

Buttercups Community Pre-school

The last term of the year has flown by and we marked the departure of 18 of our children, who left us for a new school. To celebrate their achievements, we had a small graduation party and picnic and whilst being a sad occasion it was fantastic to see how confident and grown up the children have become. We wish them the best of luck at their new schools and hope that they keep in touch, so that we can see them continue to grow and flourish.



We are looking to recruit a new member of staff from September, to join our experienced team of Early Years Practitioners and help care for the children. Experience with young children is desirable, but not essential as training and support will be provided. We need someone for a couple of mornings a week from 9 am to lunchtime, with scope for additional hours and days. Salary will be dependent upon qualifications and experience. Please email buttercupspreschool@yahoo.com or ring 07949 119106 for more information. Interviews will be held in August.

Kaye Morris

I & S GROUNDWORKS LTD

Your Local Company for

- Driveways
- Patios
- Foundations
- Drainage
- Site Clearance

Please call

Ian Boreham on 07831672907 or

Simon Boreham on 07768821364

Marsh Mail

Learning to become more responsible and independent is a key part of adolescence. We welcomed our new cohort of 180 Year 6 students to LVC at the start of July for their induction programme. It was great to see how much confidence they developed over the two days with us. Initial anxieties about navigating a larger school, managing new catering arrangements and acclimatising to different learning environments and lessons were soon allayed.



In my introductory assembly to parents/carers I spoke about how similar the emotions of fear and excitement are. The adrenaline rush that comes from experiencing a thrilling challenge can be very close to the daunting sensation of being out of your comfort zone.

Our older students also have the opportunity to broaden their horizons and engage in new adventures. A group of our outgoing Year 11 students have ventured on a trip of a lifetime through a Camps International expedition to Kenya. Their month in Africa will involve community volunteering and immersing themselves in the local culture and landscape. Meanwhile other LVC students have

Rothwell's
Carpet Cleaning

01638 428 060
01223 832 928
www.Rothwells.biz

Carpet Cleaning

Stone Floor, Upholstery & Rug Cleaning

A few points that make us stand out from the others,

Rothwell's has been in business since 1993.

We're an honest local family firm.

Our large truck mounted machines mean more cleaning & drying power for the best results possible.

Members of both the NCCA and TACCA.

We will move the furniture for a thorough clean.

100% satisfaction or it's FREE.

Call Oliver and Max Campbell for expert help today.

R BRISTLEY

9 COLLINGS PLACE, NEWMARKET

SANICLEAN

DRAIN & PLUMBING SERVICES

- Drains Unblocked Fast
- Toilets, Baths & Sinks
- Guttering & Downpipes
- Drain Repairs & CCTV Surveys
- High Pressure Water Jetting
- Domestic & Industrial
- All Work Guaranteed



Newmarket (01638) 662439

Est. 1974

R BRISTLEY
9 COLLINGS PLACE, NEWMARKET

BRUSH ELECTRIC SWEEP

- All Chimneys Swept
- Solid Fuel, Oil & Gas
- Cowls, Nets & Pots Fitted
- Stoves Repaired & Inspected
- Carpets Cleaned
- Competitive Prices
- Very Clean
- Classic Wedding Car Hire (White 1972 Citroën DS21)
- Public Liability Insurance



Newmarket, (01638) 662439

Est 1977

The Chestnut Tree
West Wrattling

CAMRA Cambridgeshire Pub of the Year 2019

Handsome Victorian Free House combining the relaxed charm of a village local with a traditional menu of hearty home cooked food.

Constantly changing selection of 4 real ales, plus a real cider, to enjoy in our fully refurbished bars or in our beautiful garden.

You won't find any gimmicks here, just a great village pub!

01223 290384
www.chestnuttreepub.co.uk

performed on the Symphonic Wind Orchestra tour in Lake Garda, Italy, and many have benefited from an enriching geography excursion to Snowdon.

The risk assessments that I read and sign off for various extra-curricular opportunities highlight the dangers inherent in adventurous activities. However, managing risk in a safe and controlled manner is an integral part of growing up. The many enrichment events that we offer at LVC provide students with the ability to learn how to do this with the support of responsible adults.

Our recent PSHE day at Linton Village College focused on many aspects of healthy lifestyles including topics such as developing relationships, managing conflict, careers planning and team building. Students were fortunate to benefit from the expertise of external speakers, including local specialist charitable organisations and the community police. Sergeant Priestley also led a drugs education information evening for parents/carers which was well attended, providing an overview of the County Lines phenomenon and equipping attendees with an understanding of the risks associated with this drug distribution model and how to report information to www.cambs.police.uk/report/Report-Shared/Report-a-crime

Helena Marsh, Principal



CUTTING & COLOURING
HAIR BY JO DENNY
WOMEN | MEN | CHILDREN

41 LINTON HIGH STREET | T: 01223 893 285
(BEHIND BOSWELL'S BAKERY)

MOPS HAIR SALON

Gardening Clubs' Outing

On a sunny Sunday in June, a coach took members from both West Wickham & District and Balsham Gardening Clubs to enjoy two interesting gardens.

Our first stop was the smaller West Acre gardens, a D-shaped old walled manor garden, situated about five miles from Swaffham. The specialist nursery selection was like a magnet to the members and many plants were purchased, as were the delicious cakes and coffee!



The next stop was Mannington Hall, the family home of Lord and Lady Walpole, with beautiful gardens surrounding the

medieval moated manor house. The rose gardens were at their best and were awash with colourful blooms (over a thousand varieties!). The



gardens include traditional herbaceous borders, a modern garden, a meadow with boardwalk, two large lakes, a wood, and a dell, which provide homes for much wildlife. A path crosses the road to the 'folly' which was a former Saxon chapel, which in spring is filled with rhododendron bushes.

We thank Rosemary Yallop from the West Wickham club for organising this splendid trip, and Annie Marks for co-ordinating the Balsham group.

Hazel Leeson

We service and repair all garden machinery.

We also have a fully stocked showroom with new and secondhand machines ranging from trimmers through to ride-on tractors.

Free collection and delivery.

Gog Magog Mower Services

Unit 1, Copley Hill Business Park, Babraham

01223 832894 david@gogmagogmowers.co.uk

www.gogmagogmowers.co.uk

The Ellesmere Centre, Stetchworth

The centre would really like to build a strong team of volunteers to help with bar work, fundraising events, or eventually to volunteer to become a trustee, another important way of helping. We are constantly striving to improve the facilities and in recent years have gone from strength to strength, but we always need more supporters to help us to continue the good work. If you feel you might be interested in offering some help with any of the above please call Julie in the office for more information.

Pop-up Coffee Morning on Friday 16th August, 9.30 am - 12, in aid of our chair-based exercise class. Please come along and join us and learn more about the group.

*The Ellesmere Centre, www.ellesmerecentre.org.uk
(01638 508212, office@ellesmerecentre.org.uk)*

2523 (Linton) Squadron Air Training Corps

Our flying calendar has never been so busy. Another four air experience flights saw cadets taking the controls of the Grob Tutor aircraft in the skies over Cambridgeshire. We have another three allocations to look forward to in the coming weeks.

With a successful July Duxford airshow and camp completed, we look forward to the third and final show of the year in September.

The progressive training syllabus is being rounded off, and cadet planning for our Bronze Duke of Edinburgh assessment expedition to the North Downs is well underway.

It will be a busy August full of paddle sports and our squadron visit to air traffic control, NATS, in Swanwick where we will visit the RAF distress and diversion centre.



[cocoon]

wellbeing + beauty

Waxing
OPI manicures + pedicures
Comfort Zone Facials
Massage + aromatherapy
Gifts + vouchers
inner lather Soaps

01223 290886

High Street, West Wickham



If you would like to join Linton Squadron or know someone who would, it isn't too late to get involved in our summer induction programme. Please email me for details; you just need to be a minimum of 12 years old and be going into year 8 or 9.



CI Bradley Wright, Training Officer 2523 (Linton Sqn)
(training.2523@aircadets.org, 07943 873272)

West Wickham & District Gardening Club

The club will be holding its Annual Show on **Saturday 24th August**. We hope you can be challenged into entering some exhibits, or to come and see how well your friends and neighbours have done. There is a wide variety of classes we hope will interest you – vegetables & fruit; cut flowers & pot plants; classes just for children; cooking & jam making; and photography, with prize money and cups to be won. Anyone from villages neighbouring West Wickham without horticultural societies of their own can enter, so we would welcome exhibits from people living in Weston Colville and West Wrating.

The show is at West Wickham Village Hall, opening at 2.30 pm, with the prize giving at 3.30 pm, followed by an auction of produce. Tea and cakes will be available in the afternoon and there will also be a raffle. Exhibits in all classes except photography can be brought to the hall between 9.30 and 11.30 am. Exhibits in the photography classes must be entered by 14th August.

Full details, show schedules and entry forms are available from:

Andrew Morris, 21 High Street,
West Wickham, Cambridge CB21 4RY.
01223 290863, morrisandrew203@gmail.com

Paul Nicholson Painting & Decorating
All Interior & Exterior Work Undertaken

Paul Nicholson



01638 508227
07890 118021
paulnicholson418@gmail.com

18 Sheriffs Court
Burrough Green
Newmarket

1st Horseheath Brownies

This term we have attended the district campfire in Newmarket, the Strawberry Evening in Linton, and had fun with water games and played Twister too.

We will also have something to celebrate at the start of next term, as four Brownies have achieved their 'Take Action' theme award. This means that they have completed at least one interested badge in the theme, completed a skills builder in the theme (we all did 'Make Change') and have completed four hours in unit meeting activities in the theme. Hopefully we can get another two or three to complete it as well, so we can have a meeting with lots of cake!

The Horseheath Brownie pack is 50 years old in October so we will be planning a party combined with a recruitment drive to see if we can get more Brownies. We will be down to eight in September. If you would like to come along and give Brownies a try, please do get in touch; all you need to be is over seven years old and free on a Wednesday.

Pauline, Katie & Laurené (brownies@horseheath.info)

Supporting RAF Veterans

Cambridgeshire has been selected as one of the pilot locations for a new project aimed at supporting RAF veterans who face loneliness and isolation.



Pete Ashcroft, Welfare Projects Manager at the RAF Benevolent Fund, said: "The Community Engagement Worker project is just one measure we have introduced to tackle the issue of loneliness and social isolation among older veterans. This year marks the RAF Benevolent Fund's centenary and we are asking the public to help us reach out to the members of the RAF family who may have fallen off the radar, and let

Weston Colville Reading Room Available for Hire



for Parties, Functions, Fitness, Art, Hobby and Music Groups, and Meetings. Recently renovated with kitchen and bar facilities and sound equipment. Licence for Alcohol and Live Music.

01223 290292 www.thereadingroom.org.uk

them know we are here to help. We want to ensure every RAF veteran, no matter how long they served, including National Service, receives the support their service to their country deserves."

The Community Engagement Workers will work with individuals to understand what the barriers are to them becoming more socially engaged and help them to overcome that, from attending a veterans' breakfast meeting with someone for the first time, to establishing activities where none currently exist.

Matt Rowe, of Peterborough, will be taking on the Cambridgeshire Community Engagement Worker role. His career in the Royal Air Force means he knows the service well. He said: "It has always been deeply humbling, the sacrifices that those who fought before us made and as an RAF veteran I have some insight into that. This scheme is about individuals and what they need to feel part of the RAF family and the wider community again."

To refer someone to the RAF Benevolent Fund, go to www.rafbf.org or call 0300 102 1919.

For more information please contact:

Rebekah Sharrock, PR Officer, RAF Benevolent Fund

(rebekah.sharrock@rafbf.org.uk,

020 7307 3305 or 07595 657979)



Feline-only veterinary clinic, providing stress free care for both you and your cat.

01223 880707

info@cambridgecatclinic.co.uk

Cox's Drove, Fulbourn, Cambridge, CB21 5HE

Feline better!





Hi, I'm a local designer working with businesses of all sizes. If you're looking to launch or improve your brand with some fresh ideas and eye catching design, please get in touch!

LOGOS • BRANDING • PRINT DESIGN • WEB

@cathycraskecreative cathycraske@gmail.com 07818 424778

cathycraskecreative.co.uk



Linton Complementary Health Centre

2B Bartlow Road, Linton, CB21 4LY

- Acupuncture
- Shiatsu
- Massage
- Counselling

Telephone: 01223 891145
Email: enquiries@lintonhealth.co.uk

Stay Fire-safe this Summer

With high temperatures potentially still to come there is still the risk of fires in open areas of land easily spreading and becoming out of control.



In June and July 2018 crews attended 551 fires in the open across the county, an increase of more than 50% on the previous year. Last July alone saw crews attend 376 fires in the open around the county.

The service's Combined Fire Control has also seen a sharp increase in the number of emergency calls they have received reporting incidents in Cambridgeshire and Suffolk. Almost 4,000 calls were answered by emergency call handlers in June and July, an increase of 13% from the previous year.

Group Commander Paul Clarke, head of community fire safety at Cambridgeshire Fire and Rescue Service, said: "We want to help ensure that people enjoy the sunny weather safely while it's here. High temperatures and dry areas of land can be perfect conditions for a fire to spread. Something as simple as not stubbing a cigarette out properly, or using a disposable barbecue on grass, can start a fire that can develop quickly."



EG
ESSENTIAL
GLAZING

REPLACEMENT GLAZING | UPVC WINDOWS AND DOORS
COMPOSITE DOORS | GARAGE DOORS

VERY COMPETITIVE RATES **FENSA**

FOR A FREE QUOTATION CALL RICHARD: 07876 637565

There are seven simple steps we urge residents to take to help prevent an outdoor fire:

1. Ensure cigarettes are completely out
2. Do not throw cigarettes out of car windows onto grass verges or vegetation
3. Put disposable barbecues on bricks, do not place directly on grass
4. Do not leave glass bottles lying on the ground, the sun's rays reflect through the glass and can start a fire
5. When camping, do not leave a campfire unattended and make sure it is completely out before you leave it
6. Use barbecues on a hard, flat surface, away from grass, shrubs or fencing
7. Talk to your children about the dangers of starting a fire.

CRUSE

CRUSE Bereavement Care carries out hugely beneficial work, voluntarily, for those who have been bereaved, whatever their age, including children.

They hold weekly coffee mornings at Westley Church, Cambridge, every Wednesday from 10 am to 12 noon when about fifty people attend, and there is also someone who will talk to you on a one to one basis. A voluntary counsellor will also visit you in your home for up to six weekly visits.

Having suffered for the last four months with delayed grief for my husband William (who died in August 2017) and also trying to process my own illness and a week in Intensive Care in 2017, my GP in Linton suggested that I contact CRUSE, and the young volunteer (she is a saddler working at Gibsons in Newmarket) has been the key to my recovery. She suggested I wrote a letter to William which was surprising therapeutic. If you have been bereaved do consider ringing the helpline 01223 302662 or contact them at cambridge@cruse.org.uk.

Joanna Sanders

Field Compost Ltd

We'll Help Your Garden Grow



- Soil Improvers
- Composts
- Manure
- Soil
- Bark
- Woodchip
- Mulch
- Lawn Care
- Horticultural Sundries

www.fieldcompost.co.uk
sales@fieldcompost.co.uk
 01440 966966

Granta Medical Practices – ‘Flu Clinics

Granta Medical Practices are pleased to announce that they will be offering a complete ‘flu vaccination service this year, with clinics being scheduled for October 2019. The Department of Health have assured us that there will be no delivery problems, and this year we will be using a highly effective quadrivalent influenza vaccine. The clinic dates will be announced shortly.

Patients eligible for flu vaccinations include:-

1. Anyone 6 months of age up to and including 64 years of age if they are in an ‘at risk’ group, eg asthma, COPD, chronic heart problems, diabetes. If you are unsure if you fit into an ‘at risk’ group, don’t hesitate to ask.
2. All patients 65 years and above, or who will be by 31/01/20.
3. All children from the ages of 2 to 10 years of age. Those children who are in primary school education will receive their vaccination at school.
4. All pregnant women.
5. Those in long-stay residential care homes.
6. Those who are carers.
7. Those who are in close contact with immunocompromised individuals.
8. Those with a learning disability.

Sandra East, Granta Communications
(sandra.east@nhs.net, 0300 234 5555)

MGP

CARPENTRY

ALL CARPENTRY WORK UNDERTAKEN

FREE QUOTES: MATT GRIGG-PETTITT 07807 968 661

FRIENDLY RELIABLE SERVICE | www.mgpcarpentry.co.uk

Recycling

Thank you so much to all who collect recycling for Ellie's fund, a charity that raises funds for brain tumour research. In partnership with TerraCycle I collect and send off plastic items that you won't normally be able to recycle in your blue bin, and it raises money for this great cause.

Here's an up to date list of all the plastics I currently collect:

- Tops from cleaning products – bleach, fabric conditioner, spray pumps, and cleaning wipe packets etc and air fresheners
- Tops from beauty products – shampoo, shower gels, bubble baths and facial wipe packets etc
- Baby food pouches – please put the top back on
- Pet food packets – soft pouches and the bags biscuits come in
- Biscuits and crackers packets/wrappers
- Crisp packets – please turn inside out
- Stamps
- Pens – Biro's, plastic pencils, felt tips etc
- Printer cartridges
- Pringle tubes and lids
- Empty toothpaste tubes and lids, toothbrushes, cardboard packing that tubes come in (please place any used brushes in a bag for hygiene)
- Disposable contact lenses and their packaging – the blisters not the cardboard please.
- Gloves that you get in kits like hair dye
- Plastic bags that bread comes in
- Sweet packet wrappers – like the pouches you buy at the cinema

I'm also collecting Tassimo discs and their foil wrappers for East Anglia Air Ambulance.

All can be dropped off at 5 Green Park, Brinkley, or the Newmarket library collect biscuit/cracker wrappers, crisp packets, and cleaning lids for me, and Tindall's of Newmarket collects ink cartridges for me.

If possible please presort things you collect; I do it all by hand and it would save me time. If you want to drop items off and leave in the parcel box, I have provided carrier bags for you to leave the lids etc in, please would you be kind enough to use them.

And finally, absolutely NO food lids, and NO milk bottle tops or drinks bottle tops.

Thank you for your kindness.

Sam Newton

St Andrew's, West Wrattling (10.45 am)			SET UP	FLOWERS	CLEANING
Sunday 4 th August	United Service, Balsham, 10.30 am	(Rev Iain McColl)	n/a	Jenny	n/a
Sunday 11 th August	Holy Communion		Alex	Louise	Sue
Sunday 18 th August	Holy Communion, jointly with Weston Colville, 9.15 am		Fanny	Louise	n/a
Sunday 25 th August	Morning Worship		Sisse	Linda	Maggie

St Mary's, Weston Colville (9.15 am)		
Thursday 1 st August	Compline, 7 pm	Steven Wheeler
Sunday 4 th August	United Service, Balsham, 10.30 am	(Rev Iain McColl)
Sunday 11 th August	Morning Worship	Steven Wheeler
Sunday 18 th August	Joint Service at West Wrattling	(Canon John Pinder)
Sunday 25 th August	Holy Communion	Rev Iain McColl, with Alistair Collen

Roman Catholic Mass

Every Saturday at 5.30 pm, Sundays at 10 am and noon, at St Philip Howard Church, Cherry Hinton. Every Saturday at 6.30 pm, Sundays at 10 am, Haverhill (St Felix Roman Catholic Church)

DIARY

August 2019

- Thur 1 Granta Vale Community Hub, Balsham
- Fri 2 Tea & Cakes, Weston Colville Reading Room
First Friday Bridge, West Wrattling
- Sat 3 Saturday Morning Café, West Wrattling
- Wed 7 West Wrattling Over 60s, Linton
- Fri 9 Crafty Drop-in Morning, West Wrattling
- Thur 15 Lunch Club, The Chestnut Tree
- Sat 24 Clay Day, West Wrattling
Annual Show, West Wickham Gardening Club
- Fri 27 Macmillan Coffee Morning, Carlton

September 2019

- Wed 4 West Wrattling Over 60s, The Chestnut Tree
- Mon 9 Cut-off, West Wrattling Oil Syndicate
West Wrattling Parish Council
- Tue 10 Seniors, Weston Colville Reading Room
Balsham WI
- Fri 13 Pop-up Pub, Weston Colville Reading Room
- Sat 14 Harvest Supper, West Wrattling
- Wed 16 West Wrattling Book Club
- Sat 21 Circular Walk, from Reading Room

Mobile library: Tuesday 6 th August, 3 rd September		
High Street, West Wrattling	12.15 - 12.45 pm	
Post Office, Weston Green	1.50 - 2.15 pm	
Mill Hill, Weston Colville	2.20 - 2.50 pm	

Revd Iain McColl
tel: 890693 email: mccoll.iain@gmail.com
 Revd Kathy Bishop, Associate Priest
tel: 892288 email: revkathy@hotmail.co.uk
 Very Revd Keith Johnson, Honorary Associate Priest
tel: 890835 email: jkeith1412@gmail.com
 Mr Steven Wheeler, Licensed Lay Minister
tel: 290396 email: steven@juicyfruitsuk.com
 Mr Alistair Collen, Licensed Lay Minister
tel: 894230 email: alistair.collen@hotmail.co.uk
 Mrs Rosemary Mead, Authorised Lay Minister
tel: 891718 email: leonardavmead@hotmail.com
 Mr Keith Day, Authorised Lay Minister
tel: 891527 email: keithdday@btinternet.com
 Mrs Jeanine Kennedy, Pioneer Minister and LLM
tel: 893838 email: jeaninekenedygv@gmail.com

Churchwardens:

St Mary's – Ian Ashbridge (291344)
 St Andrew's – Sebastian Bain (403415)
 Alex Walsham (291491)

Parish Council Contacts:

Weston Colville Parish Clerk – Jess Ashbridge,
jess@agrarian.biz
 West Wrattling Parish Clerk – Jenny Richards,
j.richards597@btinternet.com, 01223 665260

Church Administrator: Caroline (Cazzy) Walshe,
7churches.seven@gmail.com, 01223 891443

Parish Nurse: Claire Gillett,
7churches.parishnurse@gmail.com, 07498 994205

Black bins: Monday 12th & **Tuesday 27th** August,
Monday 9th & 23rd September

Blue & green bins: Monday 5th & 19th August,
Monday 2nd, 16th & 30th September

Editor: Anne Bragg (290550) or email:
editor@challengemag.co.uk

Thank you for all your articles, news, etc. If these are sent by email, they are always acknowledged; if you don't get a reply, your items haven't been received, so please resend. Some contributions may have to be edited, to fit the space available, and are published at the discretion of the editor.

September issue's copy date
Tuesday 20th August.